

# ELC

08/28/2025

## WEEKLY UPDATE



[Click HERE to download a copy of the August 31st bulletin.](#)





# Upcoming Events

## **September 7**

8am Service & 10:45am Services Resume!

Church Picnic and Sunday School Kick-off After Worship

## **September 9**

Women's Bible Study @ noon

## **September 12-13**

Youth Lock-In @ ELC @ 6pm

## **September 14**

Coffee Hour Returns!

All Sunday School Classes Begin @ 9:30am

Join the Children, Confirmants and Youth for CAMP SUNDAY!

## **September 14**

Joshua's Men @ 4pm

## **September 16**

Tuesday Morning Bible Study Begins @ 8:30am

---

# ELC'S PASTORAL UPDATES

---

## **AUGUST 24 SPECIAL CONGREGATIONAL MEETING** **SENIOR PASTOR CALL RESULTS**

On Sunday, August 24, 2025, during a special congregational meeting, the Evangelical Lutheran Church in Waynesboro, PA, voted to call Pastor Drahos Oslik as the new senior pastor. The vote was 145 yeses and three noes. Pastor Drahos has accepted the call, being grateful for the show of confidence, continued support, and love. He is looking forward to new beginnings and asks for prayers and discernment as we determine what God has in store for us.

## **ASSOCIATE PASTOR CALL PROCESS UPDATE**

ELC has unanimously voted to call a new associate pastor. The motion passed at the congregational meeting on Sunday, August 24. Please pray that God will help us find a pastor who will love our community of faith and serve here faithfully alongside us. Our congregational site profile has been approved by the council and submitted to the ELCA. Once the council approves a candidate, a meet-and-greet will be held between the candidate and the congregation, followed by worship, during which the candidate will preach. A congregational meeting will then take place, during which the congregation will officially call them as our new associate pastor. Please continue to pray for the call committee and church council as they'll start interviewing candidates.

---

# ELC'S VOLUNTEER NEEDS

---



## **CONFIRMATION MENTORING MINISTRY**

We are grateful to all confirmation mentors and prayer partners who, throughout the year, take the time to stay in touch with our confirmands. This year, we'd once again like each of our confirmands to have a mentor who would pray for them, check in with them periodically via note, card, or phone call, and be available as a spiritual support and guidance. Please consider this wonderful opportunity to be there for our confirmands and make a difference in their lives. There is a sign-up sheet in the parlor lobby. Thank you!



---

# ELC'S *picnic* & SUNDAY SCHOOL KICK-OFF

---

## **CHURCH PICNIC IS SEPTEMBER 7TH**

Our annual church picnic will be at ELC on the Sunday after Labor Day, following the 10:45am service.

The church will provide chicken, hot dogs & drinks.  
Please bring a side dish or dessert to share!



**There is no  
Sunday School  
on this day.**

---

# FALL BIBLE STUDIES

---

## WOMEN'S BIBLE STUDY

The Women's Bible Study group will meet for a light lunch on **September 9th at 12:00 noon** at Judy Reed's house. We will study Sarah of the Old Testament, and we welcome new people to join our group. Please email [reedjudy1945@gmail.com](mailto:reedjudy1945@gmail.com) or call 717-749-3452 if you plan to attend.



## JOSHUA'S MEN

This study group reconvenes on Sunday, **September 14 at 4-7PM** in the ELC Community Room. Our next and last 2 sessions will be Sunday, October 12 and November 9, also from 4-7PM in the ELC Community Room. Questions - Contact Information: Jeff Rock / [jeffrock@yahoo.com](mailto:jeffrock@yahoo.com) / 717-387-1746

---

# YOUTH

---

# YOUTH CHURCH

# LOCK-IN KICK-OFF

---

This year's youth ministry kick-off lock-in will happen on **Friday, September 12, 2025**. We will meet at church at 6:00 PM. Junior Youth (4th and 5th grade) will join us for the first hour and a half. We'll order pizza for dinner and will have snacks later in the evening. We will end the lock-in with breakfast on Saturday morning. You're more than welcome to invite your friends; if you're doing so, please talk to Pastor Drahus. All friends must complete an ELC liability/health form before attending. At the lock-in, we will play games, including the ultimate game of flashlight tag. We will also have an awesome Bible study and an inspiring evening worship in the new chapel. Do not miss this opportunity to join us for this amazing youth group fall kick-off.



---

# FALL SUNDAY SCHOOL CAMP SUNDAY

---

14  
SEPTEMBER

Children's, Confirmants and Senior High Youth will meet in the Chapel for CAMP SUNDAY at 9:30am!

Wear your Camp  
Nawakwa or Camp  
Kirchenwald gear!



Did you attend this  
summer? Come ready  
to share your  
experiences!



Meets  
in the  
chapel



Have photos or videos to share in our slide  
show? Please send them to Becky at  
[childrensministry@elchome.org](mailto:childrensministry@elchome.org)



---

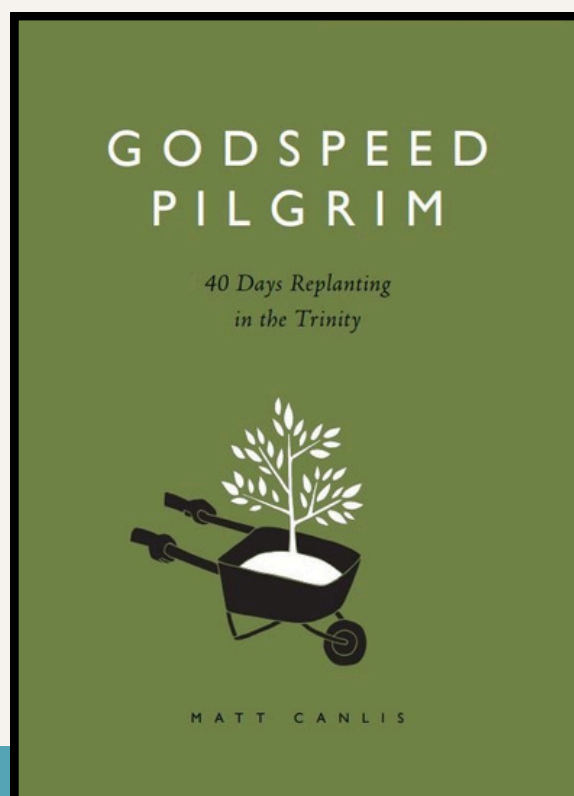
# FALL SUNDAY SCHOOL ADULT CLASSES

---

## GODSPEED

This fall, join us as we journey “Godspeed” (the pace of being known). Journey with us as we explore what it means to be present to where we are, and present to who surrounds us. Let’s slow down so God can catch up to us! If you would like to join us on this journey, please sign up on the sheet in the Narthex so study guides can be ordered. (The cost of the guide is \$19 per person.)

If you would like more information, visit [livegodspeed.org](http://livegodspeed.org) You can also contact Karen Walker with questions, [karenawalker@icloud.com](mailto:karenawalker@icloud.com).



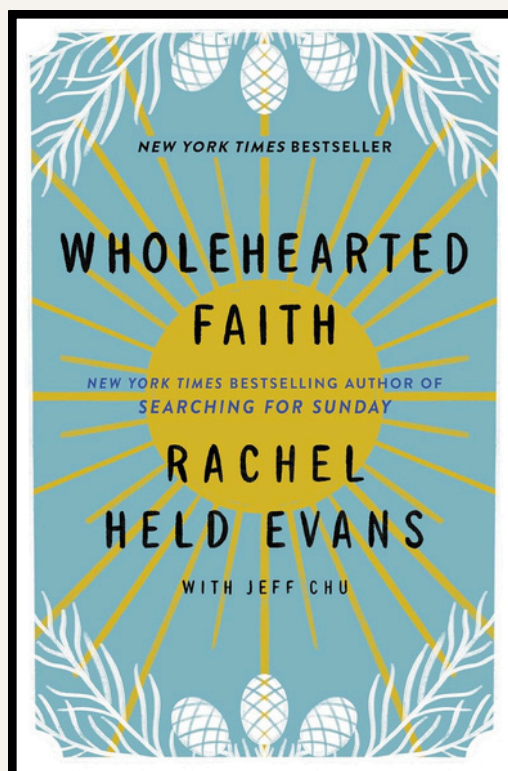
---

# FALL SUNDAY SCHOOL ADULT CLASSES

---

## WHOLEHEARTED FAITH

Carole Kipe will be teaching a 5 week study using the book called, Wholehearted Faith, by Rachael Held Evans. This book is for those who long for a sense of spiritual wholeness, based on God's grace and love. We will begin our study on Sunday, September 14th, during the church's Sunday School hour. The book can be purchased on Amazon for \$10.25. Please sign up for the class if you are going to join us. Our meeting place is yet to be determined. Carole looks forward to sharing this exciting spiritual adventure with you!



---

# FALL SUNDAY SCHOOL ADULT CLASSES

---

## THE AUGSBURG CLASS

This class welcomes any adult wanting to explore God's Word through a standard scripture series of lessons. This Bible study class uses the International Sunday School Lessons, also known as the uniform series. It provides a structured, six-year plan for studying the entire Bible. Participants share through discussion, prayer, reflection and song. Joyce Nowell is the coordinator.



---

# FALL BIBLE STUDIES

---

## TUESDAY MORNING BIBLE STUDY

Our Tuesday Morning Bible Study continues this fall. If you like to discuss news headlines and look at them from a Biblical perspective, Tuesday Morning Bible Study is a place for you.

Our meetings will resume on **Tuesday, September 16, at 8:30 AM** at the Parlor House Restaurant (724 South Potomac Street). We'll meet in the back banquet room and continue with our usual format: breakfast and time of fellowship. Then, we will study the Wired Word Bible Study. Each study focuses on a different topic, allowing you to join at any time. We are done by 10:00 AM. Don't miss out on this opportunity to grow in faith.





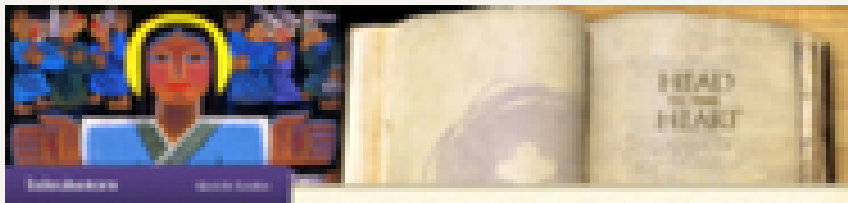
---

# YOUTH CONFIRMATION NEWS

---

## CONFIRMATION PARENTS & YOUTH MEETING

Attention all families of 6th, 7th, and 8th-grade youth. We will have our initial confirmation meeting in the upstairs confirmation room (Room 206) on **Sunday, September 21, at 9:30 AM**. At this meeting, we will cover all the details about the ELC Confirmation Ministry. We hope that both parents and youth will be able to join us. We're looking forward to another wonderful confirmation year.



## 2025 Confirmation Worship Service Informational Meeting

Traditionally, we confirm our 9th-grade youth after they complete their confirmation program on Reformation Sunday. This year, Reformation Sunday will be on **October 26**. There will be an informational meeting for parents and all 9th-grade youth on Sunday, September 21, immediately following the second worship service. At this meeting, we will discuss the upcoming confirmation worship service, and families will receive all the needed information.

---

# ALIVE 2025

---

# MIDDLE SCHOOL YOUTH RETREAT

---

## AT CAMP NAWAKWA

Attention all middle-schoolers!!! Once again, this fall, we are attending ALiVe, a middle school retreat at Camp Nawakwa! The dates for this annual event are **Friday, September 26 – Sunday, September 28, 2025.**

The weekend retreat combines faith formation teaching in small groups around a common theme. It includes large group gatherings with live music and singing, speakers, videos, games, and lots of fellowship and inspiring worship. Campfires, mealtime, free time, and rec are all balanced with the learning sessions, so youth have a holistic experience of Christian community, faith formation, and fun! The theme of this year's ALiVE retreat is Better Together.

Registration letters will be mailed to all middle school-age youth. Please mark your calendars!



---

# ELC'S COMMUNITY OUTREACH

---

## BLESSING OF THE ANIMALS

Our congregation is blessed to share our green space with our community as a small dog park. Our neighbors are very grateful and appreciate having this dog park in an area of town with limited pet-friendly green spaces. Over the past couple of years, we have used our dog park to bless the animals on St. Francis of Assisi Sunday. This year we'll continue in this neat tradition. Join us on **Sunday, October 5, at 2:00 p.m.** at the dog park for a brief blessing of the animals.



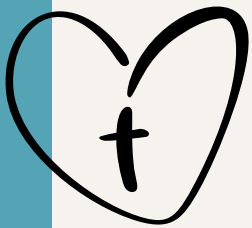
---

# ELC'S TRANSITION TEAMS

---

## CALL COMMITTEE

Please keep these people in your prayers as they go through this discernment and decision process. The members of the call committee for the Associate Pastor elected by the Synod Council are as follows: Kurt Johnson, Bobbi Kelso, Emily Lego, Ethan McDonald, Mandy McDonough, and Bob Zimmerman.



## ELC TRANSITION TASK FORCE

As our congregation undergoes the pastoral transition, Pastor Drahus has been meeting with a transition task force to receive feedback and engage in conversations about the upcoming months. The task force serves as a sounding board and provides advisory support during this time of transition. Members of the task force are Linda Bennett, Bobbi Blubaugh, Kurt Johnson, Bobbi Kelso, Rachel Moritz, Jeff Rock, Brian Walker, and Dr. Bob Zimmerman. Feel free to reach out to Pastor Drahus or any member of the committee with any questions you may have. Thank you for your continuous prayers and support.



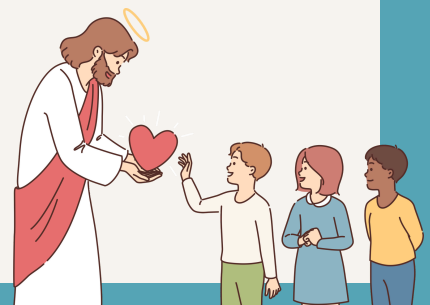
---

# ELC'S COMMUNION WAFERS

---

## YOUNGER CHILDREN RECEIVING THE WAFER ONLY DURING HOLY COMMUNION

Holy Communion is a sacred meal in which Christ comes to us in, with, and under the bread and wine to nourish our faith. At ELC Waynesboro, we offer First Communion instructions to all baptized children who have entered second grade. But what about the children who are younger than the second grade who would like to receive only the wafer during Holy Communion? If the child desires to receive the wafer, and the parents are ok with it, they are allowed to do so. The wafer is received without the words, "Body of Christ, given for you", which means this is not a Holy Communion, but rather an act of inclusion and love of all children of God, regardless of their age. If families would like their younger children to receive the wafer during Holy Communion, please notify the pastor or a communion assistant.



---

# ALL SAINTS CONFIRMATION CAMP

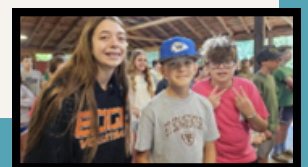
---

**AT CAMP NAWAKWA 2025**

What began as the Gettysburg-Hanover Confirmation Camp has now evolved into an exciting and dynamic cooperative ministry between congregations of the Lower Susquehanna Synod and Camp Nawakwa.

All Saints Confirmation Camp offers an exciting opportunity for students from across our synod to grow in faith and knowledge together. It helps confirmands to see their faith journey as a part of the larger community of their peers. It is also about a full camp experience, fellowship with other confirmands and pastors, relationships and new friendships, amazing and engaging worship, hands-on service opportunities, fun games led by Camp Nawakwa staff, and much more! All Saints Camp is also a great opportunity for the pastors and confirmation leaders to network, share new ideas, and to support and encourage each other in this vital ministry.

We are thrilled to have All Saints Confirmation Camp as part of our overall confirmation program at ELC! The camp truly enhanced the confirmation experience for our kids in many wonderful ways. Our confirmands enjoyed their week of learning, making new friends, and experiencing good old Nawakwa traditions. They came home energized and with many wonderful stories to share. We want to thank the ELC congregation for their generous financial support of the All Saints Confirmation Camp through the special 5th Sunday offering. If you have any questions about how to support our confirmation ministry, please talk to Pastor Drahus.



---

# ELC'S COMMUNITY OUTREACH

---

## NEW HOPE SHELTER DONATIONS

The shelter would appreciate donations of the following items, which can be placed in the box at the entrance to the sanctuary:

- Men's and women's deodorant and body wash
  - shower loofas
  - mouth wash
- twin size zipper mattress protectors
  - Lysol spray
  - paper towels & plates
- copy paper, blue pens, sticky notes, sharpies
  - fresh or frozen meat.

They are also looking for volunteers to cook and lead activities for the children.

Please contact Mandi Howell at 717.762.5840 if you can help!

**DEDICATION**  
July 27, 2025



---

# ELC'S

---

# COMMUNITY OUTREACH

---

## WAYNESBORO COMMUNITY AND

## HUMAN SERVICES

All non-perishable goods are welcome,  
but the Waynesboro Human Services food pantry is especially  
in need of:



All food items will be  
donated to Waynesboro  
Community and Human  
Services to help the less  
fortunate. Thank you for  
your continued  
generosity.



Looking for some fresh veggies?  
Visit their Fresh Express on  
**the first Tuesday of each month**  
**from 10am-12pm!**

Visit <https://wchs-pa.org/>  
or call [717-762-6941](tel:717-762-6941)  
for operating hours or to volunteer!





# ELC'S COMMUNITY OUTREACH

## WAYNESBORO COMMUNITY AND HUMAN SERVICES BACKPACK PROGRAM



### SUGGESTED BACK TO SCHOOL DONATIONS


2025-2026 School Year

- Backpacks (child and teen sizes)
- #2 Pencils
- Pencil cases / pouches
- Eraser blocks / caps
- Pencil Sharpeners
- Children's Scissors
- Glue sticks / bottles
- Markers
- Colored Pencils
- Highlighters
- Sticky Notes
- Index Cards
- Play-Dough
- Folders- clasps
- Folders- no clasps
- Notebook Paper
- Single Subject Spiral Notebooks
- Composition Notebooks
- 2 inch Binders
- 3 inch Binders
- Rulers
- Dry Erase Markers
- Dry Erasers
- Ear Buds
- Headphones
- Water Bottles



**No Crayons please, we have plenty!**

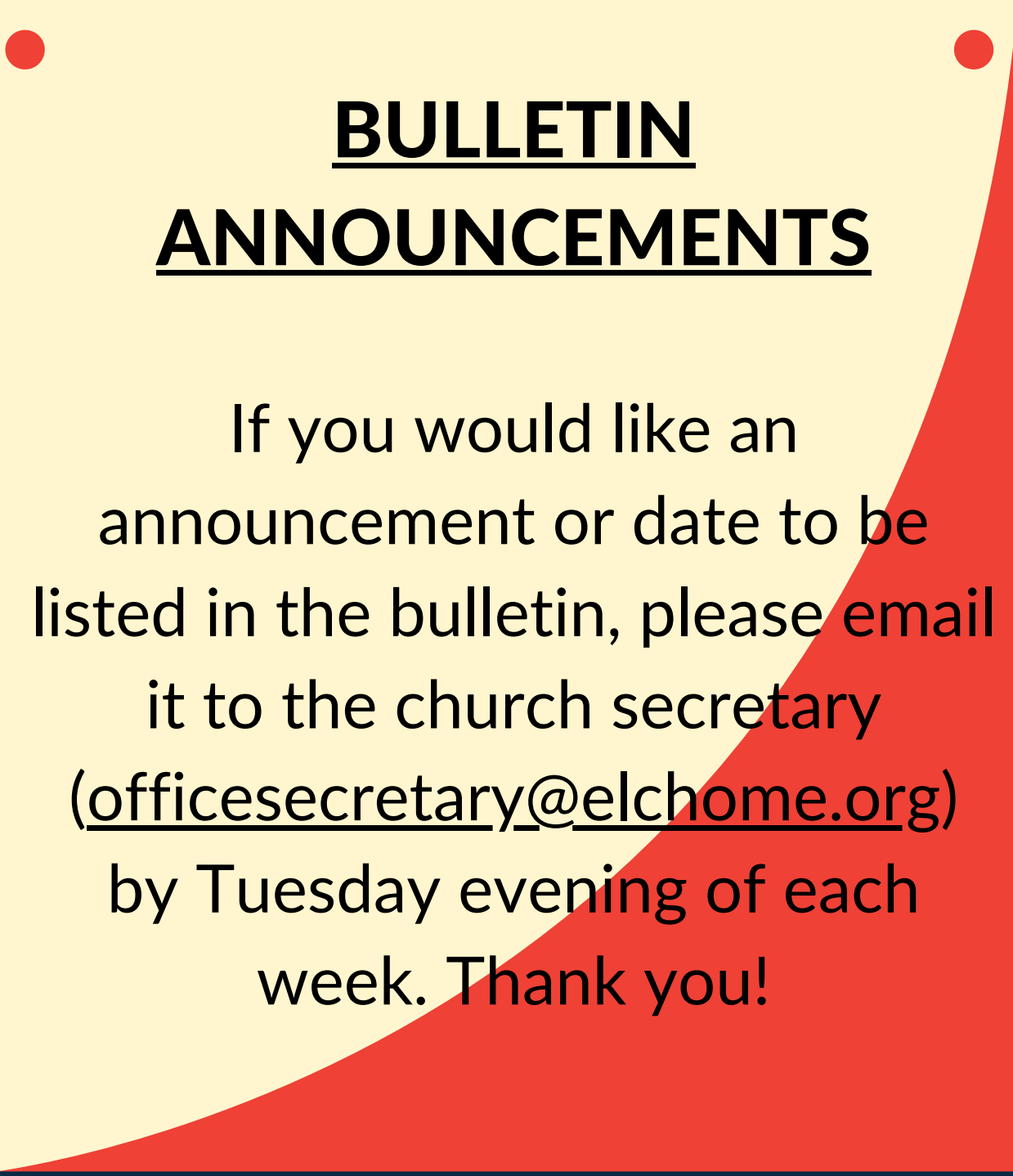
All donations can be placed in the yellow wheelbarrow with the other WCHS items.



---

# BULLETIN ODDS & ENDS

---



## BULLETIN ANNOUNCEMENTS

If you would like an  
announcement or date to be  
listed in the bulletin, please email  
it to the church secretary  
([officesecretary@elchome.org](mailto:officesecretary@elchome.org))  
by Tuesday evening of each  
week. Thank you!

# SEPTEMBER


# MONTHLY CALENDAR



Sun	Mon	Tue	Wed	Thu	Fri	Sat
	1 <b>Labor Day -</b> Office Closed	2 <b>6:30pm</b> Worship Team	3 <b>6:30pm</b> Cathedral Bells  <b>7:30pm</b> Celebration Choir	4 <b>9am</b> Sewing Belles	5 Pastors day off	6
7 <b>8am</b> Traditional Worship Service <b>10:45am</b> Celebration Worship Service <b>After 2nd Service</b> Annual Picnic	8 <b>7pm</b> Finance Committee	9 <b>12pm</b> Women's Bible Study  <b>6:30pm</b> Church Council	10 <b>6:30pm</b> Cathedral Bells  <b>7:30pm</b> Celebration Choir	11 <b>9am</b> Sewing Belles	12 Pastors day off	13
14 <b>8am</b> Traditional Worship Service <b>9:30am</b> Sunday School <b>10:45am</b> Celebration Worship Service <b>12pm</b> Worship & Music Committee	15	16 <b>8:30am</b> Bible Study @ Parlor House  <b>6:00 pm</b> Youth Committee  <b>6:30pm</b> Worship Team	17 <b>6:30pm</b> Cathedral Bells  <b>7:30pm</b> Celebration Choir	18 <b>9am</b> Sewing Belles	19 Pastor's day off	20
21 <b>8am</b> Traditional Worship Service <b>9:30am</b> Sunday School/ Confirmand Parent/Youth Meeting <b>10:45am</b> Celebration Worship	22	23 <b>8:30am</b> Bible Study @ Parlor House  <b>7pm</b> Christian Ed Committee	24 <b>6:30pm</b> Cathedral Bells  <b>7:30pm</b> Celebration Choir	25 <b>9am</b> Sewing Belles	26 Pastor's day off  Confirmand's ALIVE Retreat	27
28 <b>98am</b> Traditional Worship Service <b>9:30am</b> Sunday School <b>10:45am</b> Celebration Worship Service	29	30 <b>8:30am</b> Bible Study @ Parlor House				

**OFFICE HOURS: Mon.-Thurs.: 9:00 AM - 2:30 PM Friday 9:00 AM-12:00 PM**

# SEPTEMBER THOSE WHO SERVE

<div>  <h2>Those Who Serve September 2025</h2> </div>				
<b>Duties</b>	<b>Sept. 7</b> Annual Picnic	<b>Sept. 14</b> Sunday School Resumes	<b>Sept. 21</b>	<b>Sept. 28</b>
<i>Acolyte</i> 10:45 am			George Oslík	Malu Dirr
<i>Altar Flowers</i>	In memory of Ralph's birthday, by Bette Gartzke & family	In memory of Mary Jane Kline on her birthday by her daughter, Karen.	Remembering Bob Morrow on his Sept. 18th birthday, by his family.	In memory of Isabelle Banzhoff by her granddaughter, Sue.
<i>Altar Guild</i>	David Hollinger & Wayne Caouette	Shirley Clapsaddle & Joyce VanBremen	Bobbi & Gary Biesecker	Karen Walker & Roxanne Cecco
<i>8 am</i> <i>Assisting Minister</i> 10:45 am	Pam Wagaman -- N/A	--	Rachel Moritz -- Alan Smith	--
<i>Audio Visual</i> 10:45 am <i>Screens</i>	Rich Luquette & Ethian McDonald	Brian Walker & Olivia McDonald	Mark Reed & Cadance Shemon	Brian Walker & Noah Walker
<i>Children's Message</i> 10:45 am	Donkey		Donkey	
<i>Children's Worship</i> 10:45 am	N/A		Sue Mason	
<i>8 am</i> <i>Communion Assistants</i> 10:45 am	Christy Fries & Kim Morrow -- N/A	Janey Jenkins & Barb Cahill -- Linda Bennett	Carole Kipe & Pam Wagaman -- Nancy Mace & Gary Biesecker	Pam Wagaman & Barb Cahill -- Carole Kipe & Gary Biesecker
<i>Flower Delivery</i>	Andy & Maggie Rovelstad	Chuck & Teresa	Ellie Bauerle	Joe & Sue Hess
<i>8 am</i> <i>Greeters</i> 10:45 am	Janey Jenkins (W) Peter & Joyce VanBremen (C) -- Emily Lego (W) Shirley Clapsaddle (C)	Rachel Moritz (W) Harold Moritz (C) -- Pat & Vic Martin (W) Ruth Taylor (C)	Janey Jenkins (W) Karen Berger (C) -- Pat & Dave Weaver (W) Amy Pitts (C)	Joyce & Peter VanBremen (W) -- Alison Devlin (W) Nancy Mace (C)
<i>8 am</i> <i>Lectors</i> 10:45 am	Joyce VanBremen -- N/A	Pam Wagaman -- Alison Devlin	Rachel Moritz -- Dr. Bob Zimmerman	Linda Martz -- Jeff Mace
<i>8 am</i> <i>Ushers</i> 10:45 am	Team C -- Team B	Team D -- Team C	Team E -- Team D	Team A -- Team E